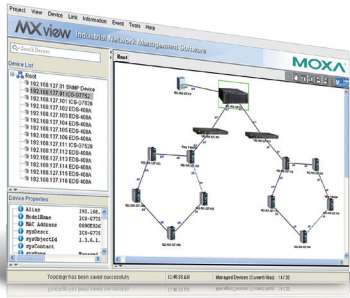


MXview



Industrial network management software designed for converged automation networks



- Event Playback records network events and replays past network incidents
- Discovers and visualizes network devices and physical connections automatically
- Central management of configurations and firmware for Moxa devices
- Flexible events and notifications with self-defined threshold and duration
- Supports third-party devices with MIB compiler and MIB browser
- Comprehensive reports, including inventory, traffic, and availability reports
- Generates OPC 2.0 compliant tags automatically to integrate with SCADA/HMI applications
- Provides a virtual demonstration network that lets you experience the software without connecting any devices
- Supports MXview ToGo mobile app for remote monitoring and notification—anytime, anywhere

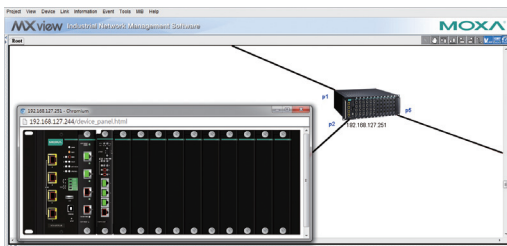
Introduction

Moxa's MXview network management software is designed for configuring, monitoring, and diagnosing networking devices in industrial networks. MXview provides an integrated management platform that can discover networking devices and SNMP/IP devices

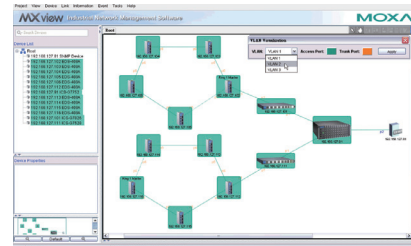
installed on subnets. All selected network components can be managed via a web browser from both local and remote sites—anytime and anywhere.

Visualization

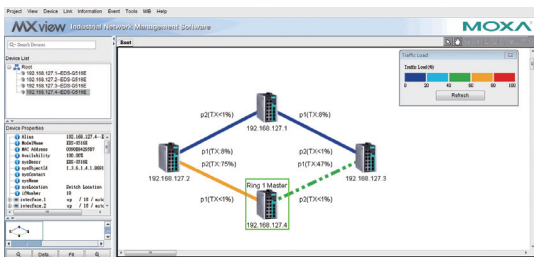
- Discovers up to 2,000 Moxa devices and SNMP/ICMP devices within scan range
- Visualization of redundant link status and device roles of network redundancy protocols
- Visualization of graphic VLAN groups and IGMP snooping roles
- Visualization of network traffic loading with color-coded links
- Device front panel visualization, including ports and LED indicators
- Visualization of managed PoE device power consumption
- Displays third-party device icons



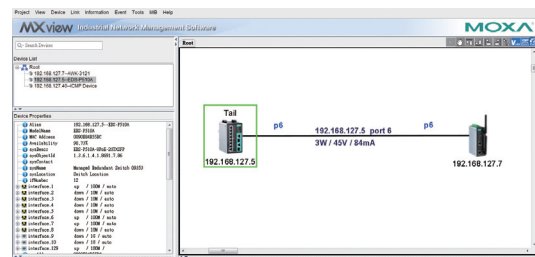
Virtual Device Panel



VLAN Visualization



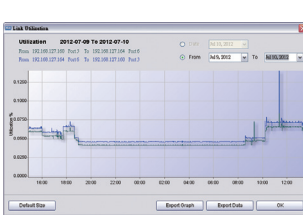
Traffic Load Visualization



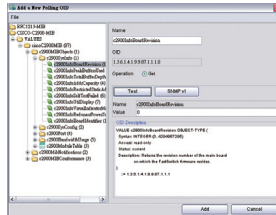
PoE Visualization

Network Diagnostics and Event Notification

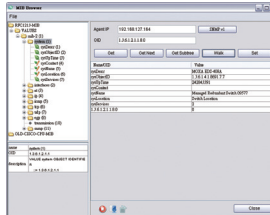
- Detect problems in real-time with SNMP trap/inform, or periodic polling
- Generate trend graphs to track bandwidth utilization and error packet rate statistics, accurate to four decimal points
- Event Playback records network events, and replays past network incidents
- Flexible events and notifications with self-defined threshold and duration
- Supports Syslog server for centralized message management
- Configurable event notification alarms sent through SMS, email, and SNMP trap, or locally through program notification, message box, and audio alerts
- Generates OPC 2.0 compliant tags automatically to integrate with SCADA/HMI applications
- Group health OPC tag represents entire network status
- Real-time device availability monitoring
- Supports third-party devices with MIB compiler and MIB browser
- Collaborates with third-party NMS through SNMP traps



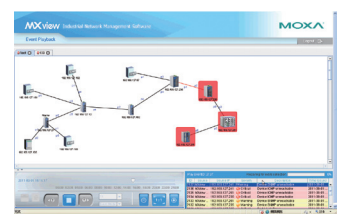
Traffic Monitoring



MIB Compiler



MIB Browser



Event Playback

Comprehensive Reports

- Maintains device availability reports and records for up to 90 days
- Generates an inventory report for each device in the network
- Compiles comprehensive device properties report
- Generates network traffic trend reports

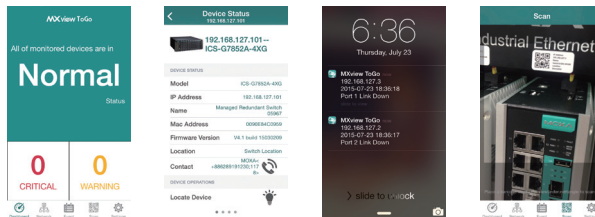
Availability and Inventory Report

Centralized Configuration and Firmware Management

- Bulk deployment of device configurations and firmware
- In one click, back up the entire MXview database in one click, including topology, job scheduling, events, and device properties
- Scheduling for periodic configuration backup
- Save history of configuration changes
- Comparison tool for checking differences between 2 configurations

Mobile APP for Network Monitoring

- MXview ToGo mobile app for remote monitoring and notification—anytime, anywhere
- Smart Device Identification with QR Code enhances operational efficiency
- Device Locator with mobile app reduces searching time at field sites



System Requirements

CPU	2 GHz or faster dual-core CPU
RAM	2 GB
Hard Disk Space	10 GB
OS	Windows XP Professional, Windows 7 (32/64-bit), Windows 8 (32/64-bit), Windows 10 (32/64-bit), Windows Server 2008 (32/64-bit), Windows Server 2012 (32/64-bit)

Ordering Information

Commercial Versions

- MXview-2000:** Industrial network management software with a license for 2000 nodes (by IP address)
- MXview-1000:** Industrial network management software with a license for 1000 nodes (by IP address)
- MXview-500:** Industrial network management software with a license for 500 nodes (by IP address)
- MXview-250:** Industrial network management software with a license for 250 nodes (by IP address)
- MXview-100:** Industrial network management software with a license for 100 nodes (by IP address)
- MXview-50:** Industrial network management software with a license for 50 nodes (by IP address)

License Upgrade

MXview Upgrade-50: License expansion of MXview industrial network management software by 50 nodes (by IP address)

Trial Version

MXview Trial Version: A free trial version of MXview is available for download from Moxa's website

Package Checklist

- MXview CD (includes the MXview software and related documents)
- License card

: Supported Devices

MXview v2.7 supports the following devices by default.

Series	Model Name	Firmware	
AWK Series	AWK-1121	V1.4	
	AWK-1127	V1.4	
	AWK-3121	V1.6	
	AWK-3131	V1.1	
	AWK-4121	V1.6	
	AWK-4131	V1.1	
EDR Series	EDR-G903	V2.1	
	EDR-G902	V1.0	
	EDR-810	V3.2	
EDS Series	EDS-405A/408A	V2.6	
	EDS-405A/408A-EIP	V3.0	
	EDS-405A/408A-PN	V3.1	
	EDS-405A-PTP	V3.3	
	EDS-505A/508A/516A	V2.6	
	EDS-510A	V2.6	
	EDS-518A	V2.6	
	EDS-510E/518E	V4.0	
	EDS-G508E/G512E/G516E	V4.0	
	EDS-G512E-8PoE	V4.0	
	EDS-608/611/616/619	V1.1	
	EDS-728	V2.6	
	EDS-828	V2.6	
	EDS-G509	V2.6	
	EDS-P510	V2.6	
	EDS-P510A-8PoE	V3.1	
	EDS-P506A-4PoE	V2.6	
	EOM Series	EOM-104/104-FO	V1.2
	ICS Series	ICS-G7526/G7528	V1.0
		ICS-G7826/G7828	V1.1
ICS-G7748/G7750/G7752		V1.2	
ICS-G7848/G7850/G7852		V1.2	
ICS-G7526A/G7528A		V4.0	
ICS-G7826A/G7828A		V4.0	
ICS-G7748A/G7750A/G7752A		V4.0	
ICS-G7848A/G7850A/G7852A		V4.0	

Series	Model Name	Firmware
IEX Series	IEX-402-SHDSL	V1.0
	IEX-402-VDSL2	V1.0
IKS Series	IKS-6726/6728	V2.6
	IKS-6524/6526	V2.6
	IKS-G6524	V1.0
	IKS-G6824	V1.1
	IKS-6728-8PoE	V3.1
	IKS-6726A/6728A	V4.0
	IKS-G6524A	V4.0
	IKS-G6824A	V4.0
	IKS-6728A-8PoE	V4.0
ioLogik Series	ioLogik E2210	V3.7
	ioLogik E2212	V3.7
	ioLogik E2214	V3.7
	ioLogik E2240	V3.7
	ioLogik E2242	V3.7
	ioLogik E2260	V3.7
	ioLogik E2262	V3.7
	ioLogik W5312	V1.7
	ioLogik W5340	V1.8
	MGate Series	MGate MB3170
MGate MB3180		V1.0
MGate MB3270		V1.0
MGate MB3280		V1.0
MGate MB3480		V1.0
MGate MB3660		V1.0
MGate EIP3170		V1.0
MGate EIP3270		V1.0
MGate 5101-PBM-MN		V1.1
MGate 5102-PBM-PN		V1.1
MGate 5105-MB-EIP		V1.0
MGate W5108		V1.2
MGate W5208	V1.2	

Series	Model Name	Firmware
NPort Series	NPort S8455	V1.3
	NPort S8458	V1.3
	NPort 5110	V2.4
	NPort 5130/5150	V3.4
	NPort 5210/5230/5232	V2.6
	NPort 5410/5430/5450	V3.9
	NPort 5600-8-DT/5650-8-DT	V2.2
	NPort 5600	V3.5
	NPort 5610-8-DTL/5650-8-DTL	V1.1
	NPort 5110A/5130A/5150A	V1.1
	NPort 5210A/5230A/5250A	V1.1
	NPort IA5150/IA5250	V1.4
	NPort IA5150A/IA5250A	V1.1
	NPort IA5450A	V1.2
	NPort 6150/6250/6450	V1.9
	NPort 6610-8/6610-16/6610-32	V1.9
	NPort 6650-8/6650-16/6650-32	V1.9
	NPort 5150AI-M12	V1.0
	NPort 5250AI-M12	V1.0
	NPort 5450AI-M12	V1.0
PT Series	PT-7528	V3.0
	PT-7710	V1.2
	PT-7728	V2.6
	PT-7828	V2.6
	PT-G7509	V1.1
	PT-508/510	V3.0
	PT-G503-PHR-PTP	V4.0
TN Series	TN-5508/5510	V1.1
	TN-5516/5518	V1.2
	TN-5508-4PoE	V2.6
	TN-5516-8PoE	V2.6
VPort Series	VPort 26A-1MP	V1.2
	VPort 36-1MP	V1.1
	VPort P06-1MP-M12	V2.2

Note: MXview supports the listed or higher firmware versions.

Note: Additional model names will be added as MXview is updated. Check Moxa's website for the most up-to-date information.